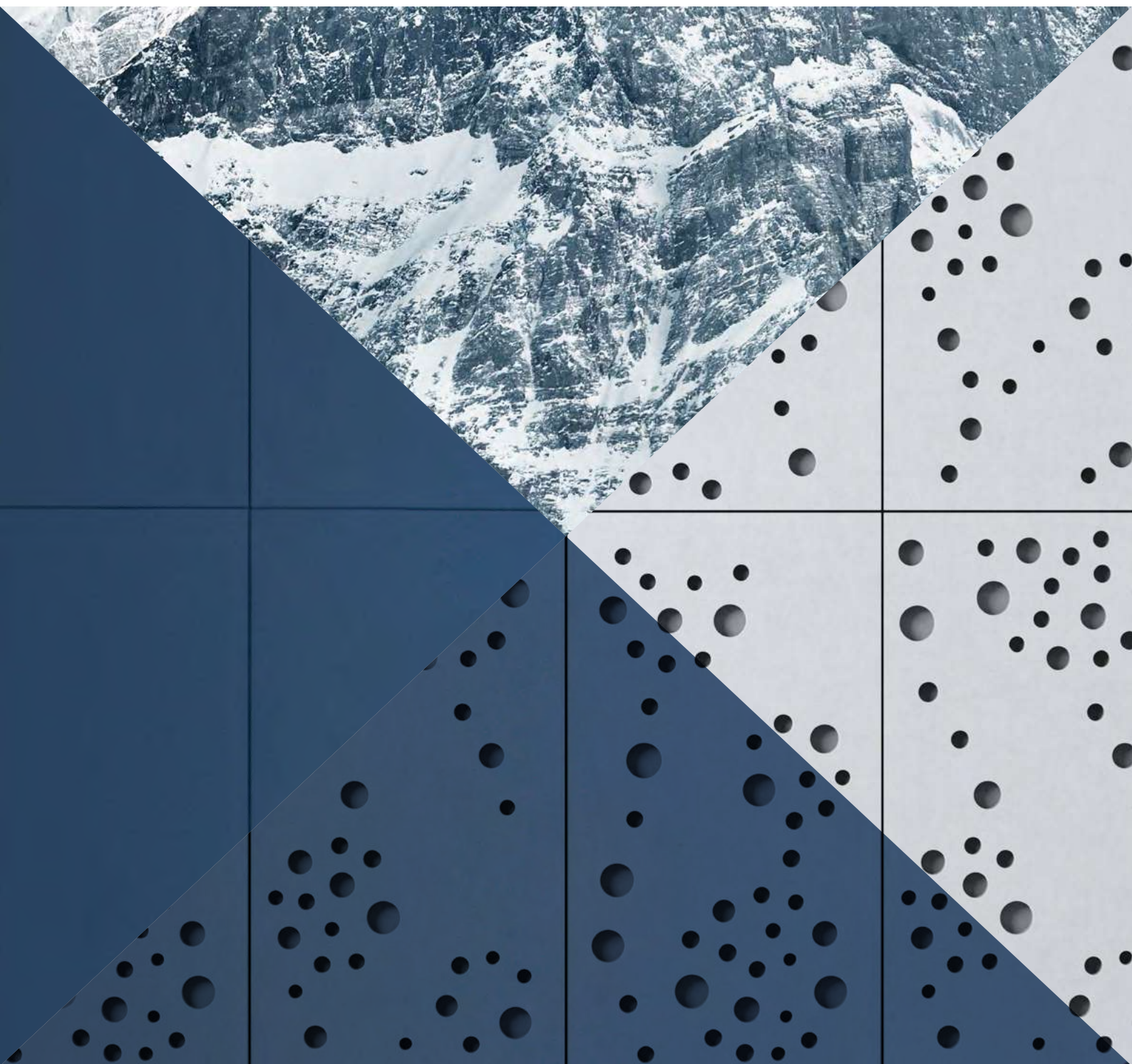
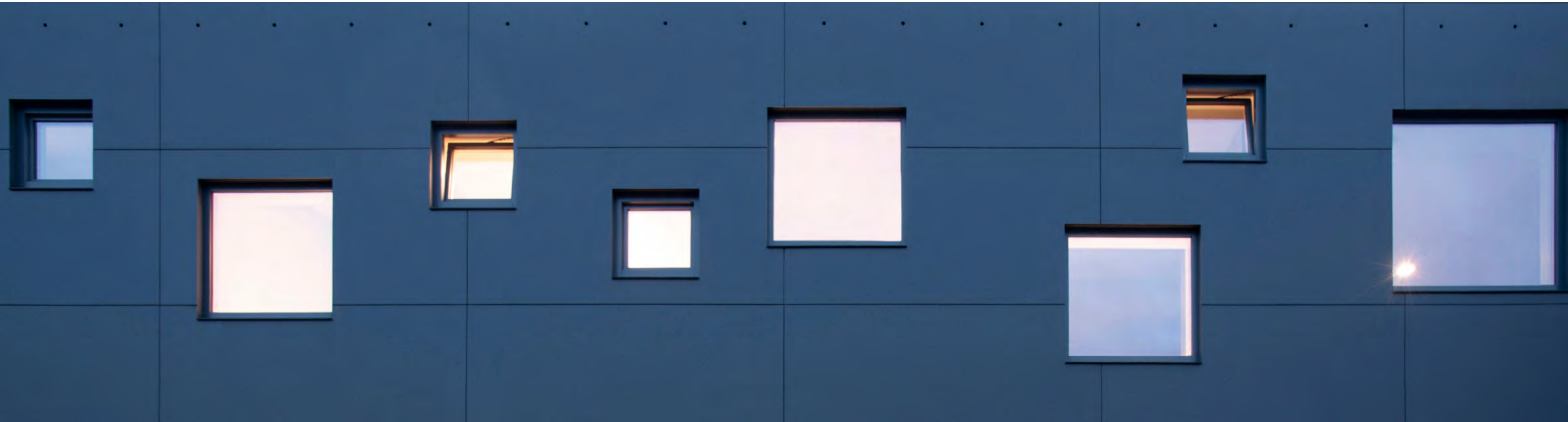


SWISSPEARL

Facades





Index

About Swisspearl

| | |
|-------------------------------|-------|
| Material & Sustainability | 12–13 |
| Tradition & Strong Values | 14–15 |
| Rear-ventilated Facade System | 16–17 |

Colour Families

| | |
|---------------------|-------|
| Natural | |
| Carat | 20–25 |
| Gravial | 26–29 |
| Vintago | 30–33 |
| Vintago Reflex | 34–37 |
| Avera | 38–41 |
| Reflex | 42–45 |
| Nobilis | 46–49 |
| Terra | 50–53 |
| Planea | 54–57 |
| Zenor | 58–61 |
| Authentic | |
| Patina Original NXT | 62–65 |
| Patina Inline NXT | 66–69 |
| Patina Rough NXT | 70–73 |

Designing Possibilities

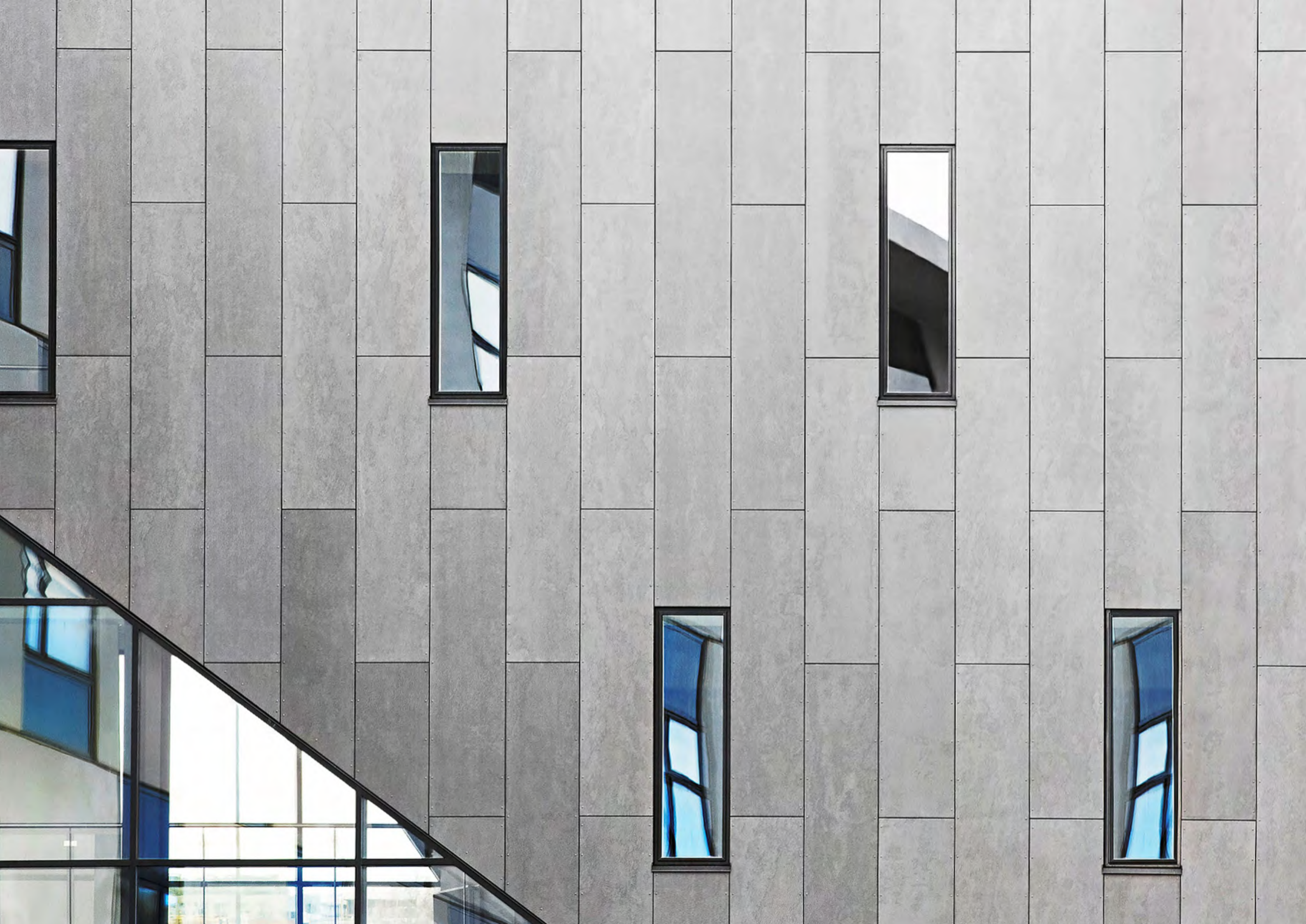
| | |
|-------------|-------|
| Freeform | 76–77 |
| Custom Cut | 78–79 |
| Engraving | 80–81 |
| Perforation | 82–83 |

Service

| | |
|--------------------------------|----|
| Warranty & Material properties | 86 |
| Advice | 87 |









Respect for People and the Environment



Fascination with fibre cement – a highly resistant and durable building material

Fibre cement has long been an excellent material for design and construction due to its wet formability and exceptional strength when dry. Its durability and reliability are achieved through a precise material composition that is subject to constant research and further development. The production process is a combination of many years of experience in traditional manufacturing and innovative further developments based on the latest findings.



Our fibre cement consists of cement, pulp, water, plastic fibres and air. The combination of these ingredients results in a durable building material that is also lightweight compared to other cement materials. Holding the material reveals its homogeneous nature and surface quality. Its appearance highlights the unique character and natural texture.



Fibre cement is an extremely versatile material that can be used in a variety of ways. Optimally coordinated raw materials and a consistent inventive spirit form the recipe for success of a product that has remained on trend for over 100 years and has become an integral part of architecture.

Tradition and Innovation – We Build on Strong Values



As a Swiss family-owned company, we think in terms of generations and have been doing what we do best for decades: With curiosity, passion and commitment, we create innovative and durable fibre cement products for facades, roofs, interior finishing and gardens.

Today, the Swisspearl Group is headquartered in Niederurnen, in the heart of the Swiss Alps. One of the first production facilities for fibre cement was founded here in 1903. The success story of our fibre cement began in Vöcklabruck in 1894. The place where it was invented by Ludwig Hatschek.

Today, the traditional production process is combined with state-of-the-art technology. We are proud of our leading position in the innovation and technology of this material, which is used worldwide in the design of architecture and living spaces.

Swisspearl stands for Swiss quality – worldwide.



It is our goal to become the number one in the field of high-quality fibre cement. By always aiming that little bit higher, with a mindset that is always ahead of the game, and achievements that always go a little further than others on the market, we transform living spaces into dream homes.

However, there is much more to over 125 eventful financial years, namely pioneering spirit, expertise and the courage to break new ground – for a stable future.

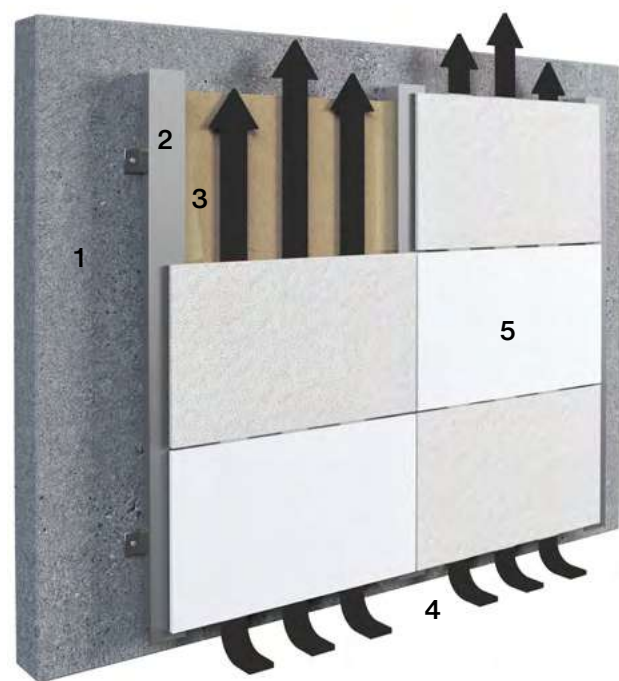


Every step counts in construction projects. This also applies to manufacturers. Thanks to the long tradition behind our group of companies, experienced employees are able to produce high-quality fibre cement products from optimally coordinated raw materials with expertise, precision and craftsmanship. The interplay between tradition and innovation has made the use of fibre cement products possible in buildings all over the world for over 100 years.

Building for long term with Swisspearl

The rear-ventilated mounted facade

With Swisspearl, you are choosing a premium supplier of rear-ventilated mounted facades. Numerous construction types and materials of the facade are available for selection. The rear-ventilated mounted facade is regarded as a high-quality and ecological variant. No other facade system can implement the requirements for heat and moisture protection, as well as fire and sound insulation, in such a simple and visually appealing way.



1 Supporting structure, 2 Substructure, 3 Thermal insulation, 4 Rear ventilation space, 5 Swisspearl fibre cement panels

Energy-efficient

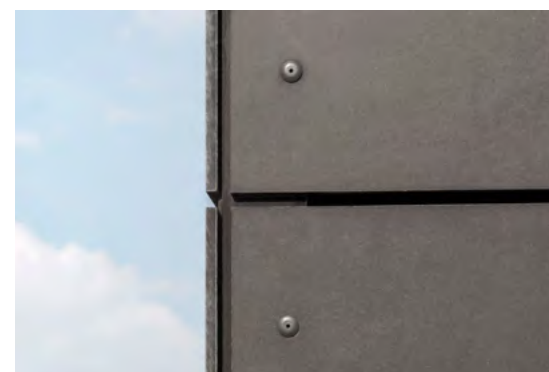
The intelligent layer structure of the rear-ventilated mounted facade provides a component specially suited for each function of the outer wall. Moisture cannot penetrate from the outside to the masonry and insulation, while the rear-ventilated space ensures optimal drying of the moisture coming from the inside. This increases energy efficiency and guarantees an ideal and healthy indoor climate all year round.

Durable and economical

A facade with Swisspearl fibre cement panels impresses above all with highly efficient thermal and weather protection and extremely easy maintenance. This ensures outstanding comfort and permanent functional reliability in the long term. Susceptibility to damage, which quickly leads to unpredictable costs, is thus reduced to a minimum. Swisspearl facades stand for lasting protection, comfort and cost-effectiveness and guarantee a long-lasting, secure building shell for decades.

Mounting types

In addition to the selection of colours, formats and surface structures, the design of facades also includes a choice of mounting methods for the facade panels. Different mounting methods allow a variety of design options. Swisspearl facade panels can be mounted with both visible and invisible solutions. Swisspearl offers a complete system that includes the fibre cement panels and the corresponding mounting technology.



Visible mounting of the fibre cement panels with coloured rivets

Visible mounting

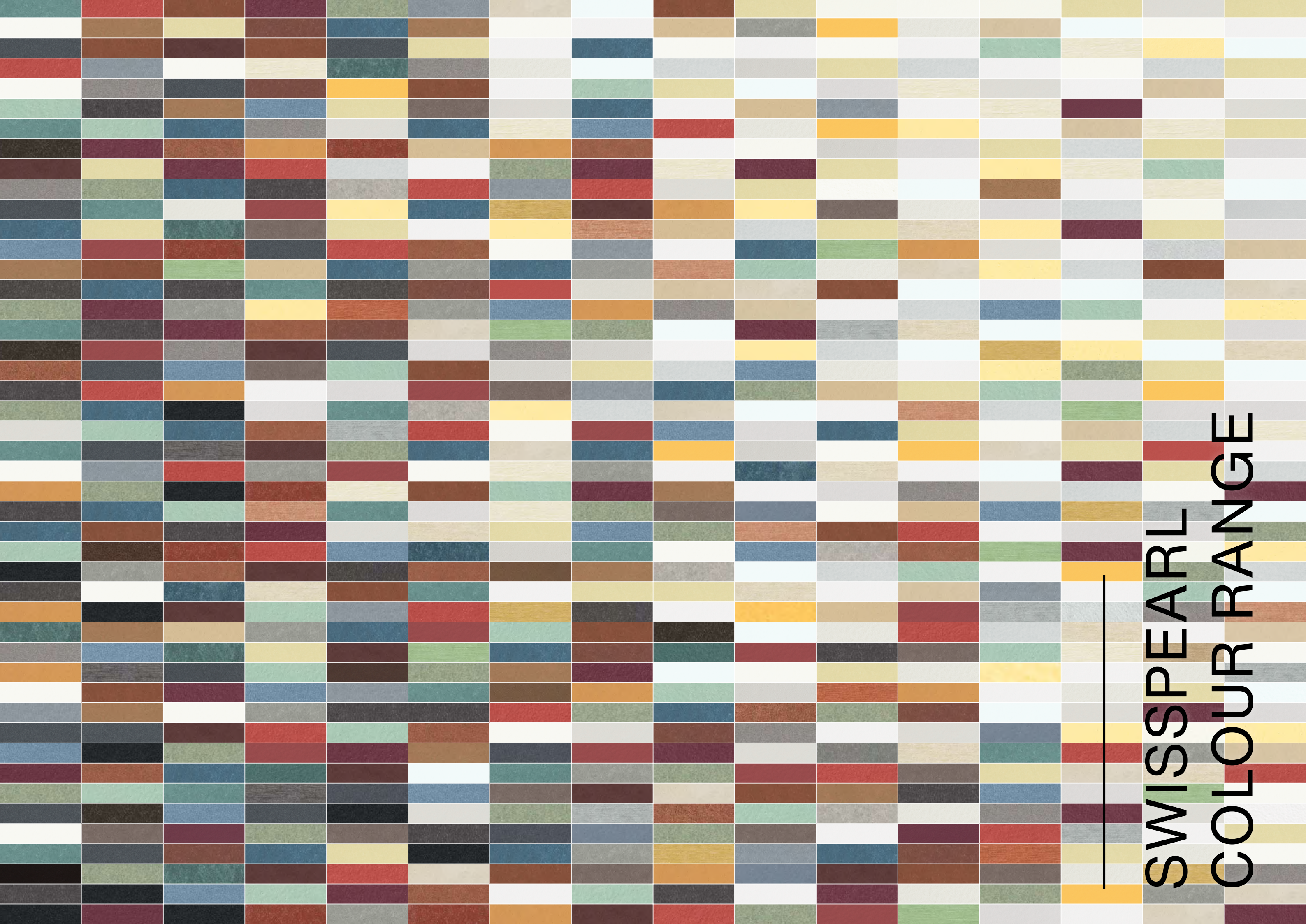
Rivets or screws are used for visible mounting. These can be deliberately selected to accentuate the contrast or harmonise with the colour of the facade panel. This creates vibrant contrasting or classically simple facades.



Invisible mounting with the Swisspearl Sigma 8 Pro system

Invisible mounting

We offer various options for the invisible mounting of Swisspearl facade panels, developed in-house by Swisspearl or in cooperation with our partners. Give the building shell an impressive and elegant appearance with an invisible facade mounting solution. The panels are mounted with anchors and brackets on the back so that the surface material of the fibre cement panels shines in its full glory from the front without visible rivets or screws.

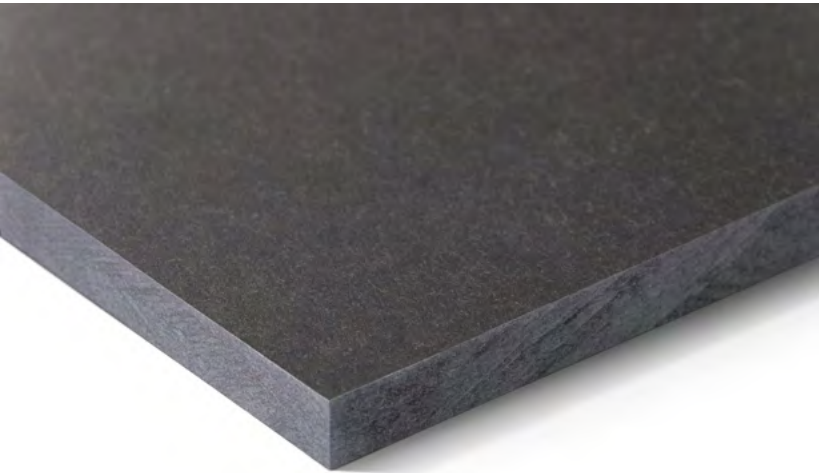


SWISSPEARL COLOUR RANGE

CARAT

Unique natural look and timeless beauty.
The translucent, slightly pigmented surface
adds to its expressive appearance.

CARAT



The naturally dried colour line Carat creates clear expressiveness through a translucent, lightly pigmented surface. The through-colouring of the fibre cement panels creates monolithic and elegant-looking building envelopes.

The 20 shades of the Carat colour line range from light to dark and from cool to warm shades, thus offering a particularly varied colour spectrum. Carat is independent and simple and at the same time offers numerous colour combinations.

Optionally, Carat is also available with a special HR coating that offers greater scratch resistance and protection against heavy soiling and graffiti.



House RnEve, Mönchhof, Austria. Architect: ad2 Architekten, Weiden am See, Austria. Photographer: Meraner & Hauser OHG/SNC, Bolzano, Italy.

Technical data

Panels
The panel is coloured through.
Coating: Translucent lightly pigmented

Panel format
Swisspearl Largo:
Maximum usable format 3050 x 1250 mm, panel thickness 8 mm and 12 mm

For a detailed summary of the sizing and color options, please refer to our delivery program.

Mounting
Visible on wooden substructure:
Screw with painted heads

Visible on metal substructure:
Blind rivets with painted heads

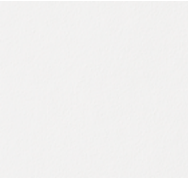
Invisible on metal substructure:
Undercut anchors

Technical data
Detailed information can be found in the DIM – “Design and Installation Manual Largo”.

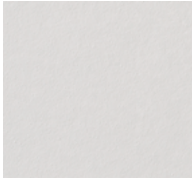
| | | |
|---|---|---|
|  |  |  |
| Crystal 8010 | Granite 8060 | Granite 8061 |
|  |  |  |
| Granite 8062 | Jade 8053 | Azurite 8040 |
|  |  |  |
| Anthracite 8021 | Anthracite 8020 | Anthracite 8023 |
|  | | |
| Anthracite 8024 | | |

Colours
20 standard colours.

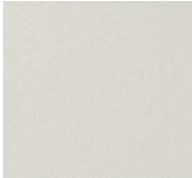
Special coating Carat HR (optional)
Carat HR (high-resistance) is a special transparent coating that has a high scratch resistance and offers protection against heavy soiling and graffiti. Carat HR is available in all Carat standard colours.



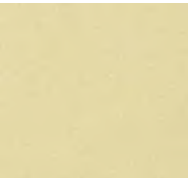
Ivory 8099



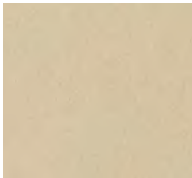
Ivory 8091



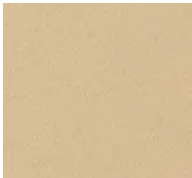
Ivory 8090



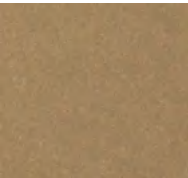
Limestone 8083



Sandstone 8000



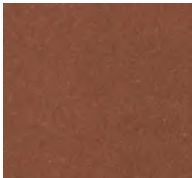
Sandstone 8002



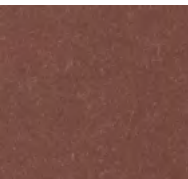
Amber 8075



Amber 8074



Coral 8034



Coral 8033



OMRRK National Museum, Budapest, Hungary. Architect: Narmer Építészeti Stúdió, Budapest, Hungary. Photographer: Meraner & Hauser OHG/SNC, Bolzano, Italy.



The OMRRK National Museum in Budapest was planned in an arrangement of four wings on the top two floors, running perpendicular to the main axis of the building. This strategy reduces the size of the building and allows the design of spaces with natural light from two directions. The facades are clad in custom coloured large-format Swisspearl panels.

GRAVIAL

Unique interplay between light and shadow.
The straight, geometrically grooved surface
offers countless possibilities for creating
a special design accent.



GRAVIAL



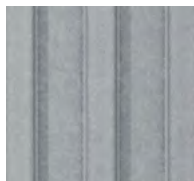
Gravidal is a naturally dried fibre cement panel with a linear milled surface structure and translucent coating. Depending on the time of day and the angle of view it creates an impressive play of light and shadow. With the exception of one brown tone, the colour line moves in soft grey tones from white to black.



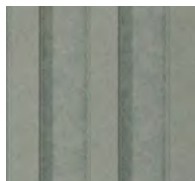
Ivory 3099



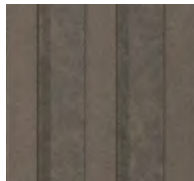
Ivory 3090



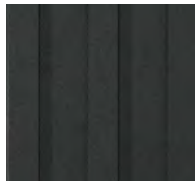
Crystal 125



Granite 624



Amber 723



Anthracite 3020

Technical data

Panels

The panel is coloured through or grey based.
Coating: Translucent pigmented

Panel format

Swisspearl Largo:
Maximum usable format 3050 x 1250 mm,
panel thickness 12 mm

For a detailed summary of the sizing and color options, please refer to our delivery program.

Colours

6 standard colours.

Mounting

Visible on wooden substructure:
Screws with painted heads

Visible on metal substructure:
Blind rivets with painted heads

Invisible on metal substructure:
Undercut anchors

Technical data

Detailed information can be found in the “DIM-Design and Installation Manual Gravidal”.



Fiches Nord, Lausanne, Switzerland. Architect: Züst Gübeli Gambetti Architektur und Städtebau AG, Zurich, Switzerland. Photographer: Roger Frei, Zurich, Switzerland.

VINTAGO

Naturally authentic, raw, vibrant and unique.
The sanded surface underlines the purity
of the fibre cement panel.

VINTAGO



Vintago is a naturally dried fibre cement panel, which appeals with a sanded and slightly rough surface. Through the sanding process with a rough abrasive grit, the interior and the originality of the fibre cement board is discreetly carried to the outside. The resulting robust texture of the fibre cement panels disrupts homogeneous surfaces without being obtrusive.

Due to its coloration through the mixing of colour pigments into the basic mass of the fibre cement panel, the Vintago colour family is a good choice for special cuts and individual design possibilities for interiors and on the facade.

With light and dark shades of gray and brown, a white and a black shade, as well as coloured shades of green, blue and red, the Vintago colour family offers a multi-faceted range. However, the rather cool tones share one thing: they authentically express the structure of the fibre cement created by the sanded character.



MFH, Zuzwil, Switzerland. Architect: Trunz + Wirth AG, Henau, Switzerland. Photographer: Meraner & Hauser OHG/SNC, Bolzano, Italy.



Technical data

Panels

The panel is coloured through.
Coating: Transparent High-Resistant

Panel format

Swisspearl Largo:
Maximum usable format 3050 x 1250 mm,
panel thickness 8 mm

For a detailed summary of the sizing
and color options, please refer to our
delivery program.

Colours

Wide selection with 10 standard colours.
Deviations in the colour shades of the
different panels are a natural part of
the production properties underlining
the vibrant character of the material.

Mounting

Visible on wooden substructure:
Screws with painted heads

Visible on metal substructure:
Blind rivets with painted heads

Invisible on metal substructure:
Undercut anchors

Technical data

Detailed information can be found in
the DIM – “Design and Installation
Manual Largo”.

VINTAGO - REFLEX

Raw, vibrant with a shiny appearance.
The polished surface combined with
a reflective surface gives a slightly raw
but vibrant, glossy appearance.



VINTAGO - REFLEX



The naturally dried and solid-coloured colour line Vintago-Reflex combines the dynamic surface textures of the two Swisspearl colour lines Vintago and Reflex. The sanded, slightly rough fibre cement panel is simultaneously given a slightly shimmering character by the submixture of reflective pigments in the surface coating. This special composition gives facades and interiors a remarkably beautiful appearance.

The three shades white, silver and black can be impressively combined with the Vintago and Reflex colour lines, opening up completely new design possibilities.



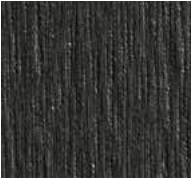
Inspiration atelier 522.



VIR 9292



VIR 9000



VIR 9221

Technical data

- Panels**
The panel is coloured through.
Coating: Iridescent, opaque
- Panel format**
Swisspearl Largo:
Maximum usable format 3050 x 1250 mm,
panel thickness 8 mm

For a detailed summary of the sizing
and color options, please refer to
our delivery program.
- Colours**
3 standard colours.
- Mounting**
Visible on wooden substructure:
Screws with painted heads

Visible on metal substructure:
Blind rivets with painted heads

Invisible on metal substructure:
Undercut anchors
- Technical data**
Detailed information can be found in
the DIM – “Design and Installation
Manual Largo”.

AVERA

Authentic, vibrant appearance.
The transparent coating allows the
original natural appearance of
the fibre cement to shine through.

AVERA

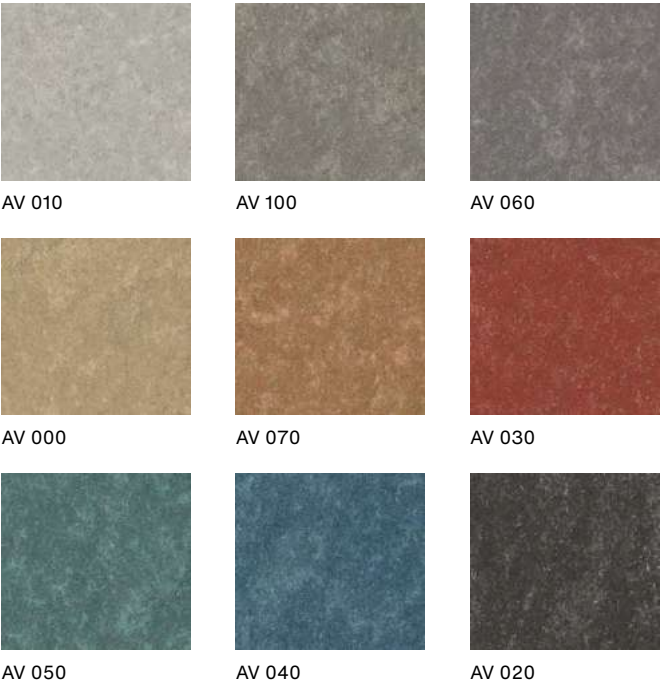


Avera is a naturally dried and through coloured fibre cement panel with a dynamic production process that gives it an unmistakably natural and authentic texture. The colour range around Avera is composed of versatile and combinable shades that ideally bring out the cloudy look of the colour line.

The highly resistant standard coating makes these panels particularly scratch-resistant and protects them from heavy soiling and graffiti. The transparent coating allows the natural appearance of the fibre cement to shine through, creating a lively surface look with varied texture and dynamic colour tones.



House on Haliburton Lake, Ontario, Canada. Architect: +VG, Toronto, Canada. Photographer: David Whittaker Photographer Inc., Toronto, Canada.



Technical data

Panels
The panel is coloured through.
Coating: Transparent High-Resistant

Panel format
Swisspearl Largo:
Maximum usable format 3050 x 1250 mm,
panel thickness 8 mm

For a detailed summary of the sizing and color options, please refer to our delivery program.

Colours
9 standard colours.
Deviations in the colour shades of the different panels are a natural part of the production properties underlining the vibrant, expressive character of the material.

Mounting
Visible on wooden substructure:
Screws with painted heads

Visible on metal substructure:
Blind rivets with painted heads

Invisible on metal substructure:
Undercut anchors

Technical data
Detailed information can be found in the DIM – “Design and Installation Manual Largo”.

REFLEX

Shiny look with metallic effects. The reflective surface coating gives the panel an expressive and shiny appearance.

REFLEX






Reflex is a through coloured, naturally dried fibre cement panel with a reflective surface coating, which creates a different return of the light. Depending on the viewing angle, this creates a restrained, shimmering look on the surface.

The colour world around Reflex ranges from seven shades of black and grey, each with a slightly green tonality, to two warm white tones and three bronze red-brown tones. With its nuanced reflective pigments, Reflex presents itself with an independent and noble character.



DC International School, Washington, USA. Architect: Perkins Eastman DC, Washington, USA. Photographer: Brycen Fischer, Baltimore, USA.

| | | |
|---|---|---|
|  |  |  |
| Ivory 4092 | Ivory 4091 | Crystal 4111 |
|  |  |  |
| Granite 4161 | Granite 4162 | Crystal 4112 |
|  |  |  |
| Jade 4051 | Amber 4071 | Amber 4072 |
|  |  |  |
| Coral 4031 | Anthracite 4022 | Anthracite 4021 |

Technical data

Panels
The panel is coloured through.
Coating: Iridescent, opaque High-Resistant

Panel format
Swisspearl Largo:
Maximum usable format 3050 x 1250 mm,
panel thickness 8 mm and 12 mm

For a detailed summary of the sizing
and color options, please refer to our
delivery program.

Colours
12 standard colours.

Mounting
Visible on wooden substructure:
Screws with painted heads

Visible on metal substructure:
Blind rivets with painted heads

Invisible on metal substructure:
Undercut anchors

Technical data
Detailed information can be found in
the DIM – “Design and Installation
Manual Largo”.

NOBILIS

Natural elegance through authenticity.
The translucent, slightly pigmented
surface highlights the fibre cement texture
in all its natural beauty and elegance.

NOBILIS



Nobilis is a grey panel with a translucent, lightly pigmented surface that highlights the fibre cement texture in all its natural beauty and elegance. The colour family combines 13 shades of brown, blue, green and grey, both warmer and cooler hints of grey. The sophisticated shades of Nobilis create an effortless aesthetic and elegant lightness.

As a naturally dried and lightly pigmented fibre cement panel, Nobilis is restrained and precisely because of this becomes an aesthetic eye-catcher. Whether deliberate combinations of soft grey tones or expressiveness through unity – Nobilis lends simple elegance to facades and interiors.



House XL, Pot na Črnile, Slovenia. Architect: SONO Arhitekti, Lokavec, Slovenia. Photographer: Meraner & Hauser OHG / SNC, Bozen, Italy.

| | | |
|---|---|---|
|  |  |  |
| Crystal 124 | Crystal 122 | Crystal 123 |
|  |  |  |
| Crystal 125 | Azurite 421 | Azurite 422 |
|  |  |  |
| Jade 521 | Jade 522 | Granite 624 |
|  |  |  |
| Granite 622 | Amber 721 | Amber 723 |
|  | | |
| Anthracite 221 | | |

Technical data

- Panels**

The panel is grey based.

Coating: Translucent lightly pigmented
- Panel format**

Swisspearl Largo:

Maximum usable format 3050 x 1250 mm, panel thickness 8 mm; 12 mm panels only available in the format 2510 x 1250 mm

For a detailed summary of the sizing and color options, please refer to our delivery program.
- Colours**

13 standard colours.
- Special coating Nobilis HR (optional)**

Nobilis HR is a special transparent coating that has a high scratch resistance and offers protection against heavy soiling and graffiti. Nobilis HR is available in all Nobilis standard colours.
- Mounting**

Visible on wooden substructure:

Screws with painted heads

Visible on metal substructure:

Blind rivets with painted heads

Invisible on metal substructure:

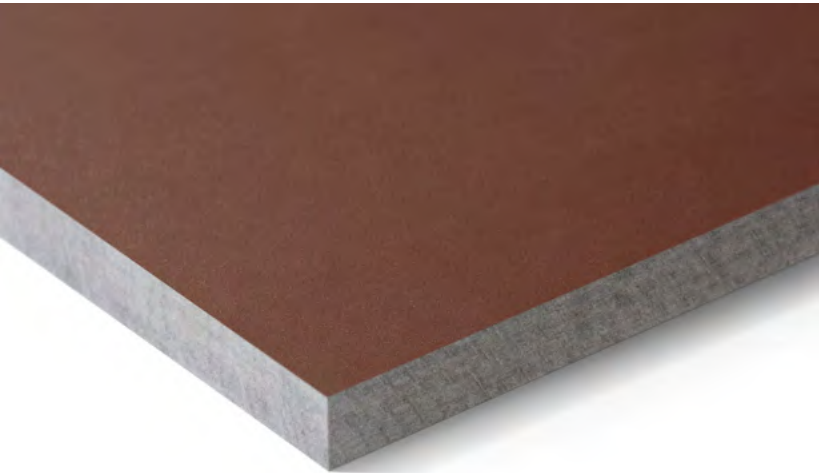
Undercut anchors
- Technical data**

Detailed information can be found in the DIM – “Design and Installation Manual Largo”.

TERRA

Earthy, warm atmosphere.
The finely coordinated colours
are reminiscent of earthy
tones and give the building
shell an earthy, natural look.

TERRA



Terra is a naturally dried grey fibre cement panel with a translucent, strongly pigmented surface. The name Terra represents the epitome of the character for the earthy warm tones.

Without noticeably large colour gradations, Terra manages to go from a light to a very dark brown with 6 tones, while preserving the harmony of the colour family. The finely balanced colours are reminiscent of earth tones and give the building envelope an earthy, natural look. Terra allows buildings to merge with their natural surroundings, giving them an approachable warmth and comfort without losing their strength and expressiveness.



Inspiration atelier 522.



Amber 751



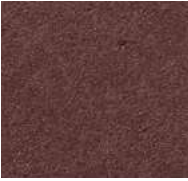
Amber 752



Amber 753



Amber 754



Amber 755



Amber 756

Technical data

Panels

The panel is grey based.
Coating: Translucent strongly pigmented

Panel format

Swisspearl Largo:
Maximum usable format 3050 x 1250 mm,
panel thickness 8 mm; 12 mm panels
only available in the format 2510 x 1250 mm

For a detailed summary of the sizing and color options, please refer to our delivery program.

Colours

6 standard colours.

Mounting

Visible on wooden substructure:
Screws with painted heads

Visible on metal substructure:
Blind rivets with painted heads

Invisible on metal substructure:
Undercut anchors

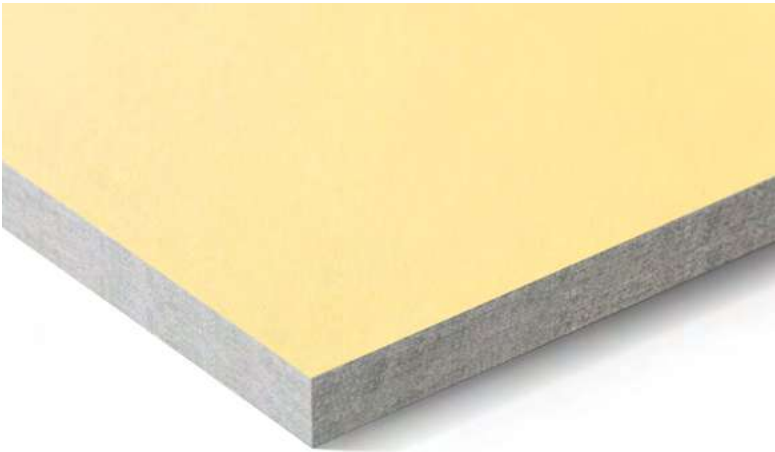
Technical data

Detailed information can be found in the DIM – “Design and Installation Manual Largo”.

PLANEA

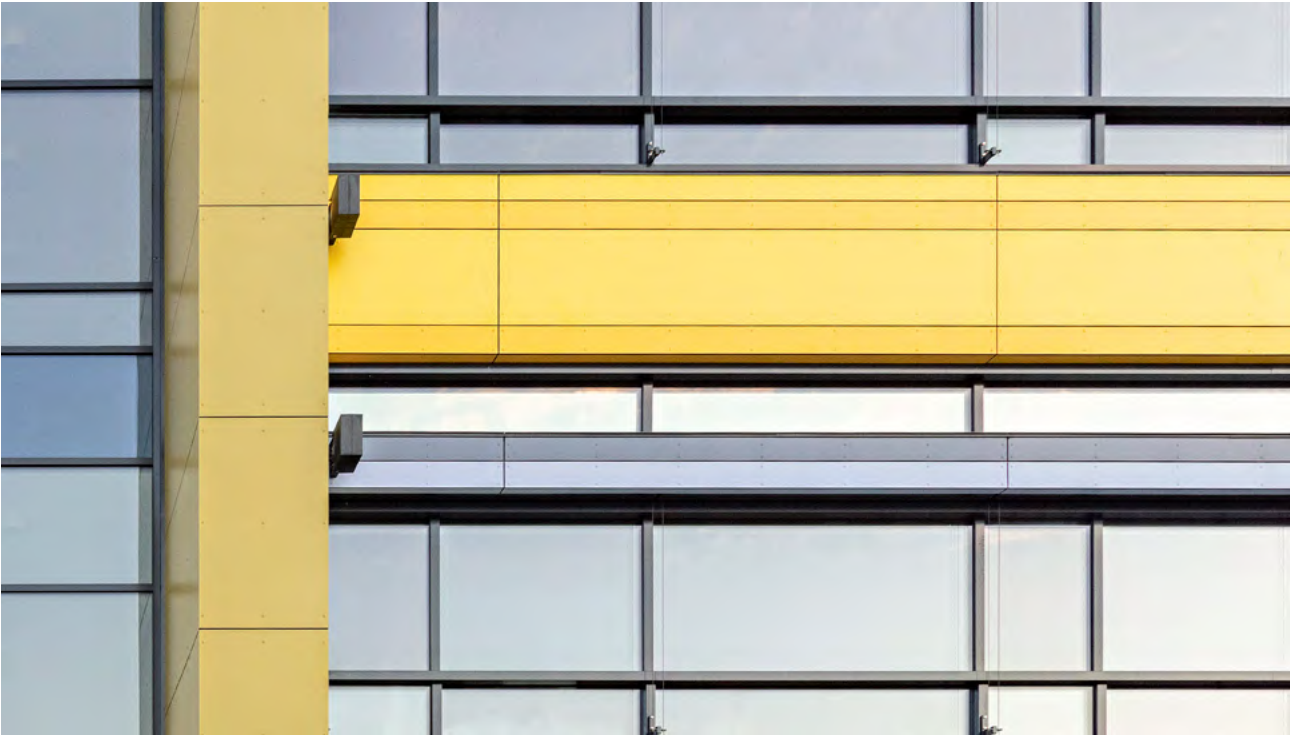
Fresh, colourful creativity. The matt, smooth surface emphasises the clear, light and intense colours and thus creates a particularly expressive effect.

PLANE A



Planea is a naturally dried grey fibre cement panel with an opaque, strong surface coating. Strong, vibrant and particularly colour-intensive are also the shades of the colour family, which is composed of two sunny yellows, two refreshing greens and four pastel to dark reds. Fine gradations of white and light grey and a strong shade of black form an exciting addition to the colour palette and allow for strong contrasts or gentle accentuation.

The matt, smooth surface highlights the clear and intense colours, making them particularly expressive. Planea can be used to create a colour-intensive building envelope that brings a bright contrast to the surroundings.



Bergi Music and Art Primary School, Garkalnes Novads, Latvia. Architect: Ozola & Bula, Riga, Latvia. Photographer: Meraner & Hauser OHG/SNC, Bolzano, Italy.

| | | |
|---|---|---|
|  |  |  |
| Snowflake 930 | Igloo 932 | Skylight 131 |
|  |  |  |
| Cactus 531 | Jungle 532 | Midnight 231 |
|  |  |  |
| Dragon 332 | Crimson 333 | Ruby 334 |
|  |  | |
| Sunrise 831 | Sunset 832 | |

Technical data

Panels
The panel is grey based.
Coating: Opaque

Panel format
Swisspearl Largo:
Maximum usable format 3050 x 1250 mm,
panel thickness 8 mm and 12 mm.

For a detailed summary of the sizing
and color options, please refer to
our delivery program.

Colours
11 standard colours.
Special colours available on request.

Mounting
Visible on wooden substructure:
Screws with painted heads

Visible on metal substructure:
Blind rivets with painted heads

Invisible on metal substructure:
Undercut anchors

Technical data
Detailed information can be found in
the DIM - "Design and Installation
Manual Largo".

ZENOR

Simple elegance.

The selected range offers
cost-effective yet high-
quality implementation.

ZENOR



Zenor is a large-format fibre cement panel with an opaque coating. The selected colour range offers cost-effective yet high-quality implementation from production to assembly. All-round protection for building shells with simple elegance.



AHS Wien West, Vienna, Austria. Architect: Shibukawa Eder Architects / FP Architekten, Vienna, Austria. Photographer: Kurt Kuball, Vienna, Austria.



| | | |
|-------|-------|-------|
| | | |
| 11115 | 11006 | 15015 |
| | | |
| 23057 | 65061 | 67007 |
| | | |
| 35154 | 33106 | 35005 |
| | | |
| 51101 | 65126 | 63077 |
| | | |
| 41055 | 69055 | 67014 |
| | | |
| 67159 | | |

Technical data

Panels
The panel is coloured through in a similar shade to the surface.
Coating: Opaque

Panel format
Swisspearl Largo:
Maximum usable format 3050 x 1250 mm,
panel thickness 8 mm and 12 mm

For a detailed summary of the sizing and color options, please refer to our delivery program.

Colours
16 standard colours.

Special coating Zenor HR (optional)
Zenor HR (high-resistance) is a special transparent coating that has a high scratch resistance and offers protection against heavy soiling and graffiti. Zenor HR is available in all Zenor standard colours.

Mounting
Visible on wooden substructure:
Screws with painted heads

Visible on metal substructure:
Blind rivets with painted heads

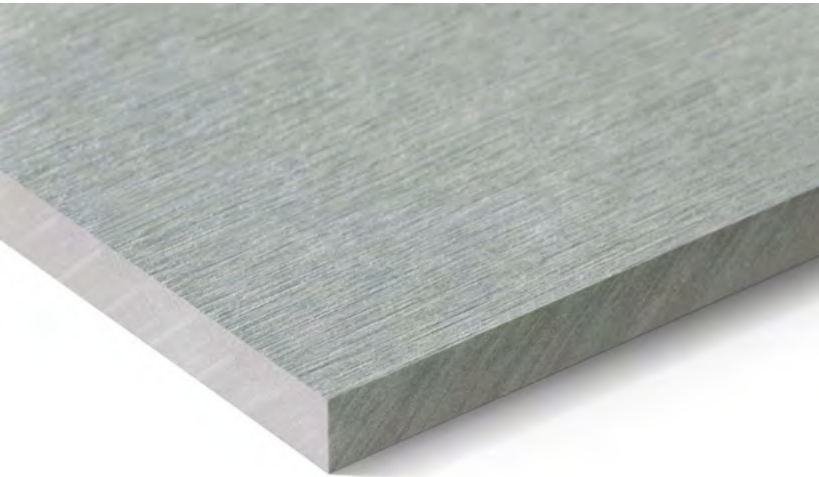
Invisible on metal substructure:
Undercut anchors

Technical data
Detailed information can be found in the DIM – “Design and Installation Manual Largo”.

PATINA ORIGINAL NXT

Natural, vibrant structures are created by a textured surface that develops a unique patina over time.

PATINA ORIGINAL NXT



Patina Original NXT is a coloured fibre cement panel with a textured surface that stylishly showcases the character of the material. The texture emphasises the fibres and the characterful properties of the raw materials. As the seasons change, a subtle patina is created that tells the story of the building and brings its facade to life.

As the panel develops a beautiful patina over time, it gives the building a unique, aesthetic appearance with small, subtle variations in the surface.

Due to the slight sanding, it is important to ensure that Patina Original NXT panels are installed in the correct direction.



Visionshuset, Ålborg, Denmark. Architect: KPF arkitekter, Ålborg, Denmark. Builder: C.W. Obel Ejendomme A/S, Ålborg, Denmark. (1st generation Patina)

| | | |
|---|---|---|
|  |  |  |
| P 222 | P 545 | P 565 |
|  |  |  |
| P 313 | P 333 | P 626 |
|  |  |  |
| P 323 | P 343 | P 020 |
|  |  | |
| P 045 | P 070 | |

Technical data

Panels
The panel is through coloured and very finely ground on the visible side. This preserves the structure of the fibre cement and creates a deliberately vibrant character. The panel surfaces are hydrophobized on all sides.

Panel format
Maximum usable format 3050 x 1250 mm, panel thickness 8 mm

For a detailed summary of the sizing and color options, please refer to our delivery program.

Colours
11 standard colours.
Deviations in the colour shades of the different panels are a natural part of the production properties underlining the vibrant character of the material.

Mounting
Visible on wooden substructure:
Screws with painted heads

Visible on metal substructure (aluminium or steel):
Blind rivets with painted heads

Technical data
Detailed information can be found in the DIM – “Design and Installation Manual”.

PATINA INLINE NXT

Light and shadow in the rhythm
of time. Linear milled indentations
create a dynamic appearance.



PATINA INLINE NXT



Patina Inline NXT is a through coloured fibre cement panel with a linear milled surface structure. The indentations create an atmospheric play of shadows, which changes depending on the time of day and viewing angle. A fine patina will form on the surface over time.

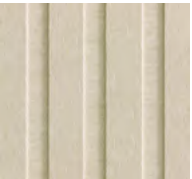
The restrained colours, which range from white to beige to a dark grey, create a stylish harmony in combination with the milled surface.



Långsjöskolan Huddinge, Segeltorp, Sweden. Architect: Tyréns, Sweden and Arkitema Architects, Denmark. Photographer: Barabild Sverige AB, Stockholm, Sweden. (1st generation Patina)



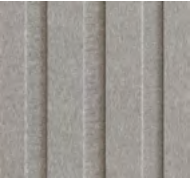
P 222



P 545



P 020



P 045



P 070

Technical data

Panels

The panel is coloured through with linear milled structural grooves. This gives the building a unique 3D effect and a dynamic appearance. The panel surfaces are hydrophobized on all sides.

Panel format

Maximum usable format 3050 x 1250 mm, panel thickness 9,5 / 8 mm

For a detailed summary of the sizing and color options, please refer to our delivery program.

Colours

5 standard colours.
Deviations in the colour shades of the different panels are a natural part of the production properties underlining the vibrant character of the material.

Mounting

Visible on wooden substructure:
Screws with painted heads

Visible on metal substructure (aluminium or steel):
Blind rivets with painted heads

Technical data

Detailed information can be found in the DIM – “Design and Installation Manual”.

PATINA ROUGH NXT

Unique, rough, versatile. The rough surface gives it a distinctive character.

PATINA ROUGH NXT



Patina Rough NXT is a through coloured fibre cement panel that creates a varied appearance due to its rough, sandblasted surface. Subtle variations in colour and texture make each panel unique. Like all variants of the Patina NXT series, Patina Rough NXT forms a fine coating over the years, which gives the facade an individual character.

The exquisite shades support the rough surface in its expressiveness and form a harmonious combination with the other Patina NXT products.



Vigtil Terrasse, Trondheim, Norway. Architect: Per Knudsen Arkitekter, Trondheim, Norway. Photographer: Kristoffer Wittrup, Atelier IISVika, Trondheim, Norway. (1st generation Patina)



P 222



P 545



P 020



P 045



P 070

Technical data

Panels

The panel is through coloured and has a velvety, textured surface on the visible side. The panel surfaces are hydrophobized on all sides. Their appearance is reminiscent of natural materials, such as naturally aged sandstone.

Panel format

Swisspearl Largo:
Maximum usable format 3050 x 1250 mm, panel thickness 8 mm

For a detailed summary of the sizing and color options, please refer to our delivery program.

Colours

5 standard colours.
Deviations in the colour shades of the different panels are a natural part of the production properties underlining the vibrant character of the material.

Mounting

Visible on wooden substructure:
Screws with painted heads

Visible on metal substructure (aluminium or steel):
Blind rivets with painted heads

Technical data

Detailed information can be found in the DIM – “Design and Installation Manual”.

The design possibilities resulting from the versatile range of our surfaces and colours can be supplemented by special finishes or surface treatments. These additional options, such as perforating, engraving or other special designs, give every building an exclusive and special visual effect.

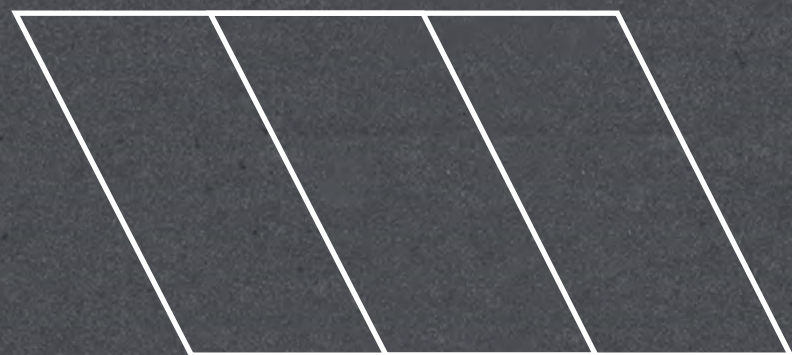
DESIGNING POSSIBILITIES



Freeform

More than right angles: Free shapes add a new dimension to the scope of design.

Thanks to the high formability of the freshly mixed material, fibre cement can be used to create free shapes that open up unimagined possibilities for the facade. Whether organic bodies, curved lines, inclined surfaces or free-flowing facade cladding in textile look – complex shapes can be achieved far beyond the conventional. Of course, our free forms offer all the advantages of the material.



Custom Cut

Tailored variety of shapes: Individually tailored elements for free facade design.

Unconventional building formations and facade designs can be created with individual cuts. Special geometric shapes and structures break straight-lined consistency and create exclusive and unique design options in special patterns. To enable as many ideas as possible to be turned into reality, we offer an individual cut for facades with special structures.

For facade designs in a special cut, the panels are cut with precision and delivered to the construction site in the exact order to enable seamless and precise assembly.

HALL 1

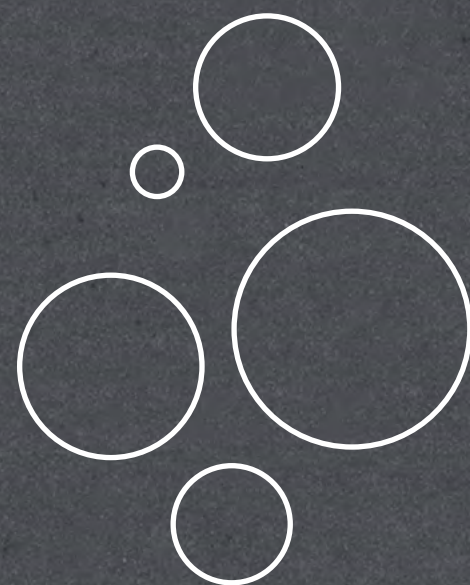


Engraving

Defining impressions: With engraved elements, shapes and patterns can be integrated directly into the facade. From fine details to large-scale motives.

Geometric shapes, individual patterns, company logos or image motives can be engraved on fibre cement panels. The engravings can appear within a single panel, change from one panel to another, or run across multiple panels to create a larger pattern. The structural feasibility of each proposed design must comply with the technical requirements. As a guideline, engraving depth is 1.5 mm (8 mm panel) or up to 4.0 mm (12 mm panel).

Engraved panels are available in Carat, other colour lines on request.



Perforation

Aesthetic one-offs: Facades with perforated panels are impressive and can be used in a variety of ways.

Perforations add a fascinating appearance to the facade or interior wall. They let natural light into the building, connect two worlds and break out of the usual design. Holes, slits and other perforations can be used to create unique effects. Perforated panels can also be functional, such as sliding shutters, wind shelters, partitions, sound absorption, or part of special lighting concepts. They can also be purely decorative by creating an overall look with many small perforations. As a guideline, the perforated area may be up to 18%.

Perforated panels are available in Carat, Nobilis, Terra and Planea, other colour lines on request.



SERVICE

Service

Warranty

Our products are manufactured to the highest quality standards. Production is subject to constant quality controls. This includes tests in third-party facilities, as well as in our in-house laboratories. If delivered products do not provide the specified performance, the warranty is valid, which covers the function of the panels and accessories. The warranty assumes that the instructions in the latest edition of the DIM - Design and Installation Manual have been followed.

Material properties

The printed colour shades shown may differ from the original colour shades. The sample panels should be used for the exact identification and colour coordination of neighbouring building parts. Fibre cement panels owe their unique character to natural ingredients, among other things. Slight variations between the different production batches can therefore not be ruled out.

Differences in texture and colour between the individual panels are a natural part of the production characteristics and underline the vibrant character of the facade effect. Such colour differences are not covered by the warranty.



We are here for you

With comprehensive consulting and service offers, we specifically address the needs of building owners, architects and planners in order to jointly develop qualified solutions. We support you with comprehensive expert advice, detailed documentation, technical manuals and the Swisspearl Architecture Magazine, which has become a renowned publication.

Our high-quality fibre cement products combine outstanding quality and durability to create solutions for aesthetic building envelopes and valuable living spaces. Our dedicated and competent employees are always there for you, your ideas and questions. We look forward to implementing joint projects.



Inspiration from the Swisspearl Architecture Magazine

Numerous construction projects are carried out with Swisspearl products around the world every year. Architecture can and must do a lot. Climate change and the importance of sustainable construction are a challenge for everyone involved in the planning and realisation of a building.

The building envelope of the future enables maximum energy efficiency. With the rear-ventilated facade made of fibre-cement panels, Swisspearl offers an environmentally-friendly building shell. In our Swisspearl Architecture Magazine, we present architecturally unique and outstanding construction projects around the globe every year.

Get inspired – [swisspearl.com](https://www.swisspearl.com)



