



Part of the ROCKWOOL Group

Rockpanel Metals

**Make your  
metal vision rock**

Rockpanel Metals

# Make your metal vision rock



# Thinking metal? Think again. Think rock.

Metals are strong, malleable and lustrous. They have been around for centuries. The age of the industrial revolution may be long gone, but the style remains. A metallic look is timeless and will never go out of fashion.

From a light silver or dark steel to a warm gold or copper: a metallic sheen is the ultimate addition to any building if you're going for a contemporary or industrial look.

Rockpanel Metals cladding is produced from compressed natural basalt, a sustainable and readily available volcanic rock from which all Rockpanel products derive their unique properties. The products combine the advantages of stone and the workability of wood.

This means you can benefit from ultimate design freedom, whilst meeting the highest sustainability, fire safety and climate requirements. The boards are robust yet flexible – bending, shaping, perforating and routing: it's all possible with Rockpanel Metals.

Are you ready to make your metal vision rock? Discover the new Rockpanel Metals range, now including 9 beautiful Elemental Metals designs and 7 unique looking Advanced Metals designs.



**Experience a new standard  
in metallic facade cladding**



## Designed to create

Finding the right balance between functionality and aesthetics is a challenge for many architects. Your design needs to be both timeless and durable. When looking for the right facade material to realize truly distinctive and innovative architectural designs, you might face practical limits.

With Rockpanel Metals, there's no need to compromise. We've got you covered on all the functional, safety, sustainability and fire requirements. You can fully focus on creating that perfect unique design. And with our advanced concealed fixing system, your flawless facade will shine even more.

A rock-solid solution with the gorgeous and lustrous appearance of metal, but with all the strengths of stone.

## **As timeless as precious metals**

Rockpanel Metals are as timeless as precious metals.

Are you going for a subtle style or a very expressive design? We offer a large selection of metal colours, so there's always a design that fits your vision. Beyond doubt a splendid metallic facade will always catch the attention.

Combine designs and shapes - any way you want it. Wherever you want to go in your design journey: the unlimited possibilities of Rockpanel will take you there.

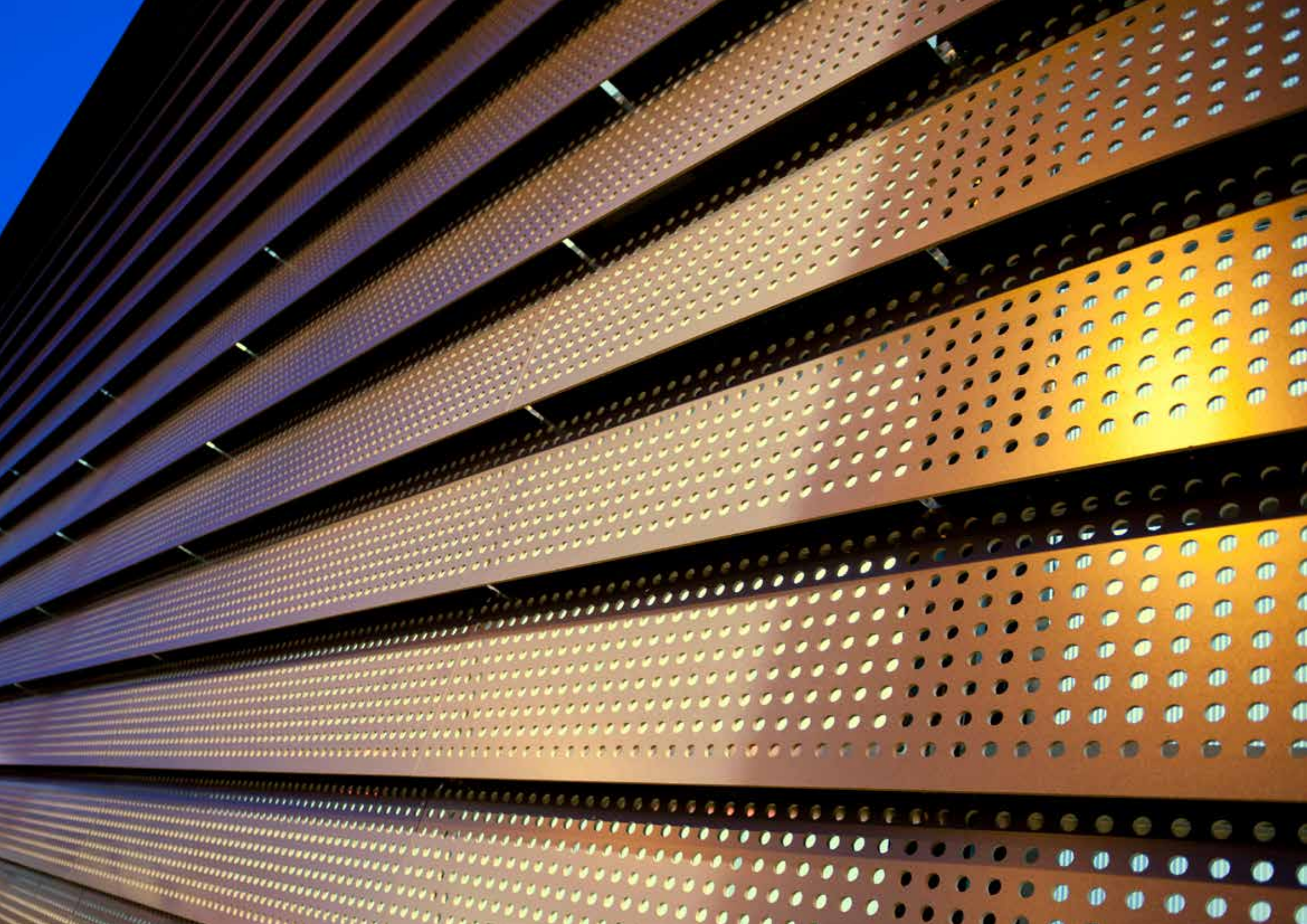
## **Play with shape & light, for lasting impressions**

When you think of metals, you'll probably think of shine and lustre. Rockpanel Metals lets you decide how much gloss you want. Many of our designs are available in three different gloss grades: matt, semi-gloss and high-gloss.

## **Bend, shape, cut, perforate; customize your facade design**

Want to create a truly unique facade design? Rockpanel Metals is ready to turn your most innovative ideas into reality. Bend, curve or cut our facade boards into any desired size and shape. By routing or perforating your facade, you can really give your facade its own signature look. Engrave unique designs in the panels or play with light and depth by perforating the facade panels. As night falls, light shines through the perforations to make the whole building glow. Rockpanel Metals boards don't require any treatment against moisture, making it even easier for you to create the most exciting effects.







**Made to  
impress**





## **Lightweight and malleable, with the strength of stone**

Rockpanel Metals facade boards are lightweight yet robust. They are impact resistant, very durable and insensitive to moisture, assuring a beautiful metallic facade for decades.

## **Engineered to last**

Thanks to the optimum colourfastness, your Rockpanel Metals facade will keep its valuable, aesthetic appearance for a long time. An extra ProtectPlus layer comes as a standard\*, which makes your facade virtually self-cleaning. This limits cleaning and maintenance (costs) to a minimum. In addition, you can even easily remove graffiti.

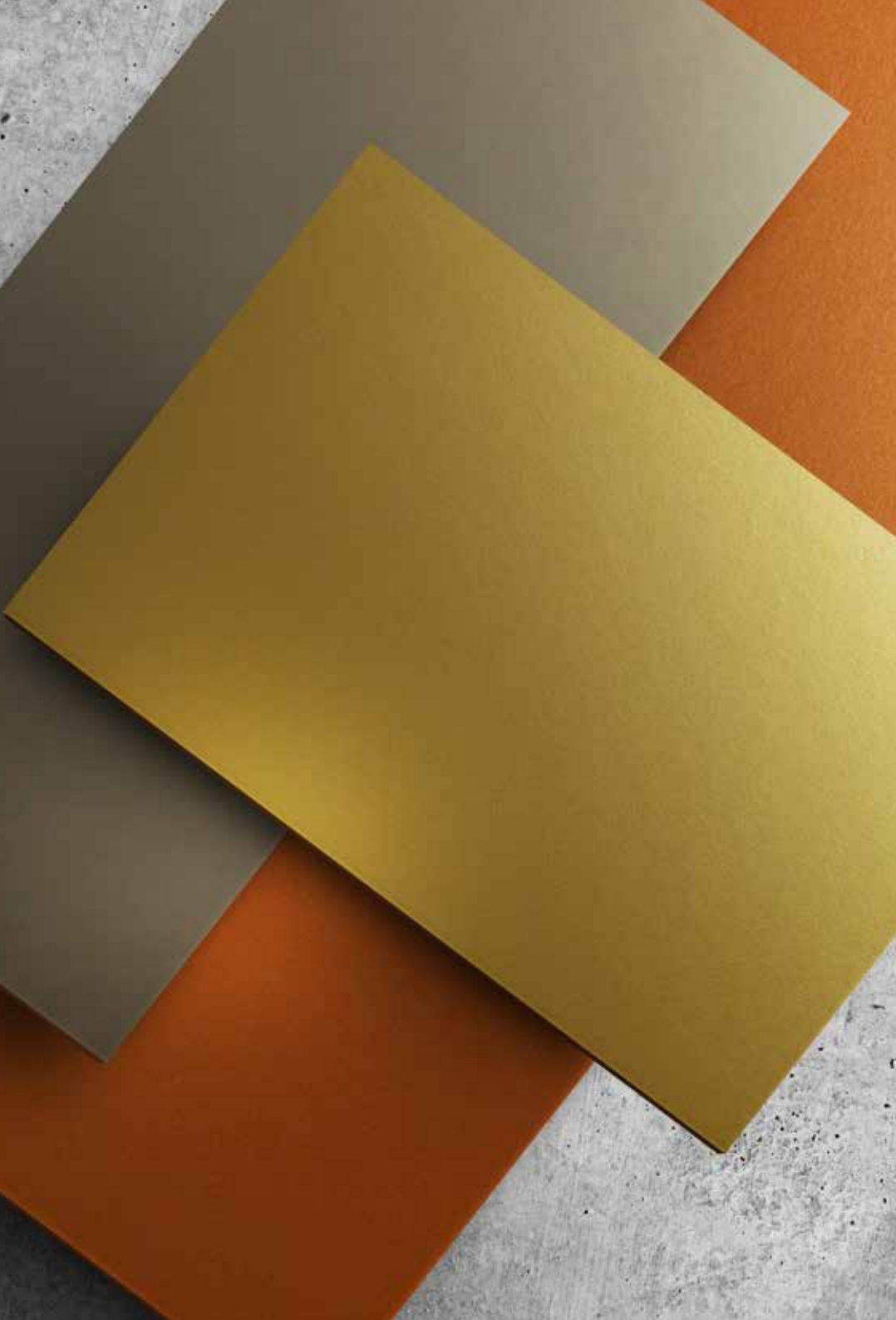
The boards have an officially confirmed lifetime of 50 years. At the end of the building life, they can be demounted and fully recycled into new high-quality stone wool products.

## **Rock-solid fire-resilience**

The fire resilience of our Rockpanel Metals boards comes from within. They are made of stone wool fibres and have a very low calorific content.

Our A2 boards meet the most stringent fire regulations (Euroclass A2-s1,d0 – non-combustible). Just like stone, they have an extremely high melting point (1000°C).

\* Except for Rockpanel Metals Elemental White Aluminium and Grey Aluminium



# Add extra shine and luxury to your facade with Rockpanel Metals

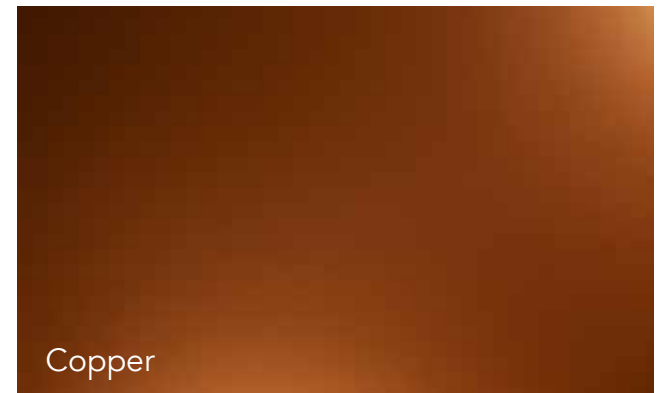
Metals have a lot in common – they are hard, strong, precious and lustrous. At the same time, they are also very different. Every metal has its own unique identity and can give your facade that signature look you desire. Let our Rockpanel Metals range inspire you in building your beautiful futureproof facade.

Our **Elemental Metals** line consists of the main precious metals such as gold, silver and platinum. It also includes other well-known metals such as aluminium, steel and copper. The White Aluminium and Grey Aluminium designs correspond to RAL 9006 and RAL 9007 and contain a remarkable sparkling finish.

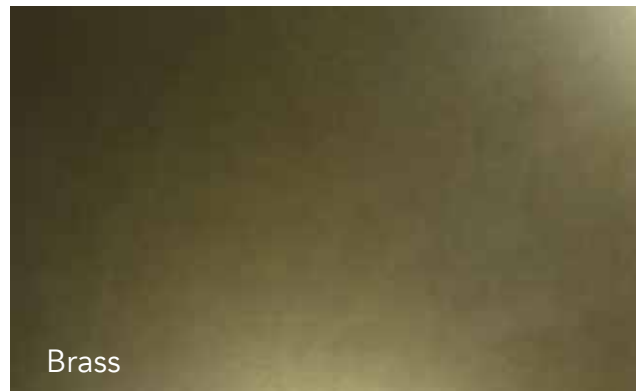
Our Platinum facade boards are a great choice if you are looking for a chic, champagne-coloured design.

Or maybe our new Gunmetal has your preference? This robust anthracite colour gives any facade a strong and sleek look.

# Elemental Metals



## Advanced Metals



## Custom Designs

Do you have a specific design in mind?

We also offer custom solutions. Contact us for more information



Our new **Advanced Metals** line includes designs which will give your facade a distinctive look. Thanks to our advanced technology, they have an exceptional worn finish that lasts for decades. These rustic designs are full of character.


Verdigris, for example, gives your facade a natural patina look, but without the influence of the elements.

Our Dark Copper provides your facade a unique worn, but everlasting finish.

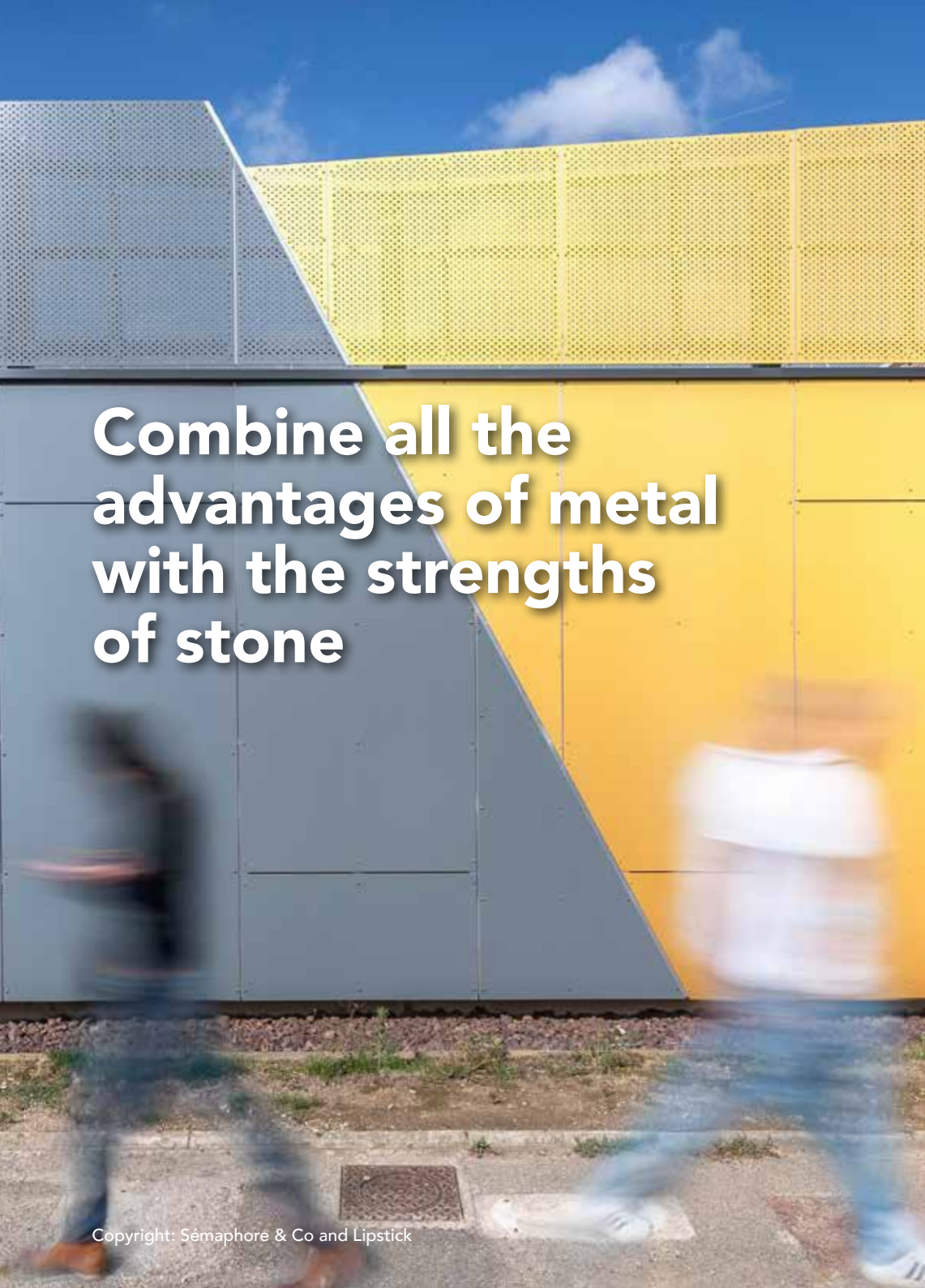
Striking a balance between the cool hue of zinc and the warmth of copper, Brass enlivens every building, giving it a distinctive and refined touch.

The warm reddish-brown colour Bronze provides any facade a luxurious appearance and perfectly matches with other building materials such as brick and timber.

The Advanced Metals range offers a modern rhythmic aesthetic to compliment any building.



**Add the element  
of uniqueness to  
your facade design**



# Combine all the advantages of metal with the strengths of stone

## A seamless facade

Some metals contract and expand with changes in temperature, but not Rockpanel. Rockpanel Metals cladding offers a very high level of dimensional stability. The material is insensitive to moisture and does not expand or shrink, even with big changes in temperature and humidity. This enables very narrow joints of > 5 mm, providing a seamless look.

## Closing the loop

Looking for sustainable facade cladding? The core ingredient of Rockpanel Metals facade boards is a unique natural material: basalt, a non-depletable volcanic rock. This makes Rockpanel a responsible choice, as it is not exhausting the earth's valuable resources. In addition, the boards can be recycled indefinitely without any loss of quality, keeping the loop closed and the carbon footprint low.

## Readily available

Not only is the Rockpanel core ingredient readily available – our products are too! Thanks to our innovative production line, we are able to offer short lead times and low minimum order quantities while safeguarding high quality facade boards. Whether you envision a complete metallic facade or subtle details in your design – it is possible.

## The smallest details matter

The final appearance of your building is influenced by the fixing method you choose. Fixing is not simply a technical requirement but also vital to achieving your vision.

Emphasize the industrial look of your facade with screws or rivets. These visible fixing options are available in all RAL colours, so there's always a perfect match available.

Or create a polished, serene appearance with the invisible adhesive system or concealed fixing. All fixing options are covered by our ETA.





# Experience all the benefits of Rockpanel Metals



## Rockpanel Metals: key product properties

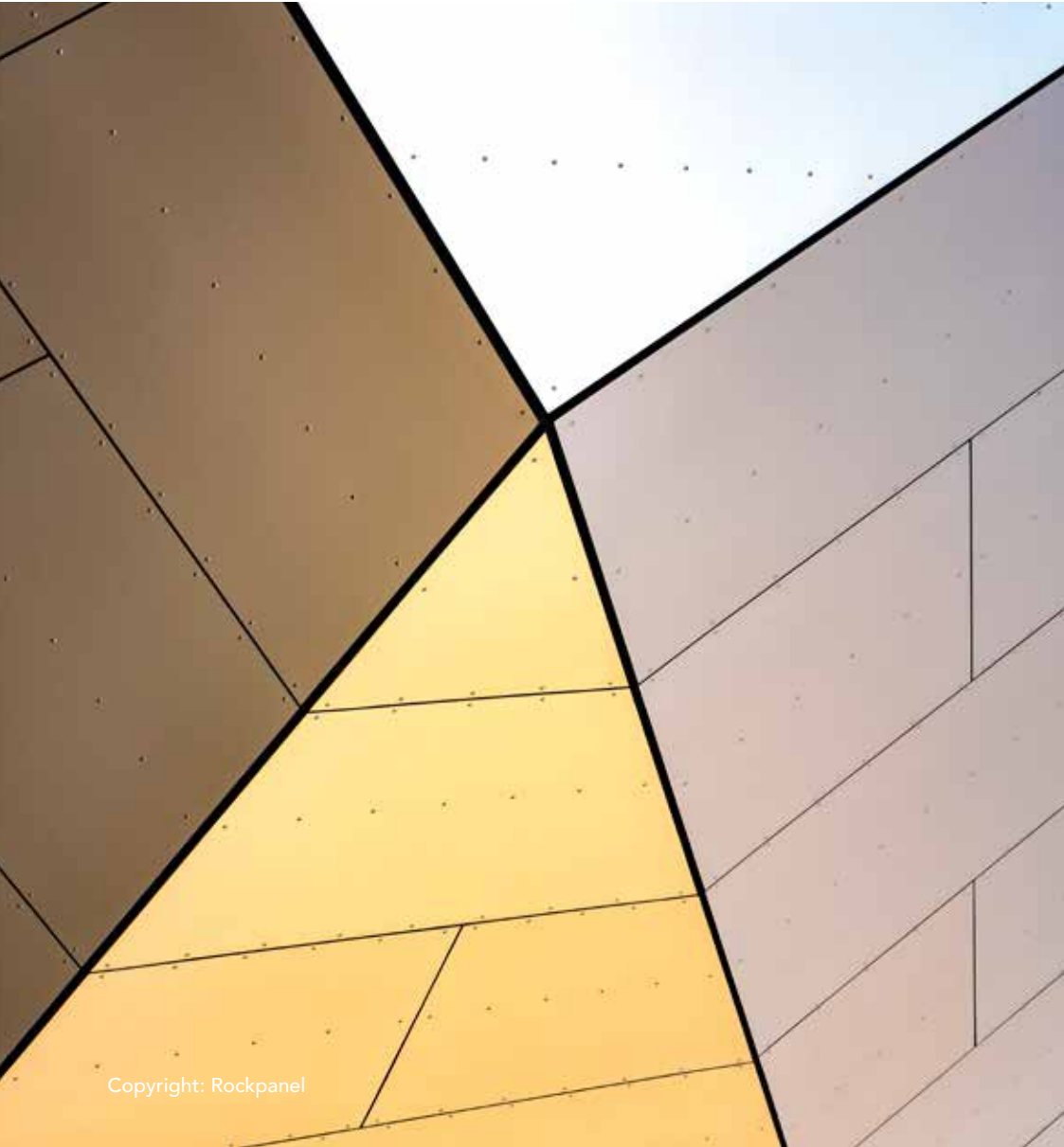
Rockpanel Metals	Durable	A2	Unit	Test / classification method
Thickness	8	9 and 11	mm	
Weight	8.4	9: 11.25 11: 13.75	kg/m <sup>2</sup>	
Fire classification*	B-s2,d0	A2-s1,d0	Euroclass	EN 13501-1
Colour stability	ProtectPlus: 4 or better	ProtectPlus: 4 or better	Class on greyscale	ISO 105 A02
Density, nominal	1050	1250	kg/m <sup>3</sup>	EN 323
Thermal conductivity	0.37	0.55	W/m·K	EN 10456
Water vapour permeability S <sub>d</sub> (at 23 °C and 85% RF) ProtectPlus	< 3.5	N / A	m	EN 12572
Coefficient of thermal expansion	10.5	9.7	x10 <sup>-3</sup> mm/m·K	EN 438:2 clause 17
Coefficient of moisture expansion (after 4 days)	0.302	0.206	mm/m	EN 438:2 clause 17
Bending strength, length and width (f <sub>05</sub> )	≥ 27	≥ 25.5	N/mm <sup>2</sup>	EN 310 / EN 1058
Modus of elasticity m(E)	4015	≥ 4740	N/mm <sup>2</sup>	EN 310

\* The Euroclass-classification of all Rockpanel products is based on testing with non-combustible mineral wool insulation. For the field of application covered by the classification, please see the relevant Declaration of Performance.

For high-rise buildings Rockpanel recommends the application of non-combustible (Euroclass A1 or A2) cladding and insulation.

All Rockpanel Metals designs except for Elemental Grey Aluminium and Elemental White Aluminium are considered to be directional. Colour variation may occur if panel directionality is not observed.

# Reference cases & testimonials



Copyright: Rockpanel





## Re-imagining the shape of retail at Merry Hill Shopping Centre

The renovation of the outside of Intu Merry Hill Shopping Centre in Brierley Hill implies a major replacement of outdated façade cladding with Rockpanel boards in a variety of different finishes.

**Architect Simon Smith of INC Design Associates Ltd explains:**

“The facade is a play on geometric forms giving uniformity but catches the eye across the facade. The shadows created by the pyramids provide continuous interest throughout the day and is further enhanced by the unique lighting at night. The ability of Rockpanel to create a custom design helped to meet the fire classification requirements as well as meeting the original design brief”.

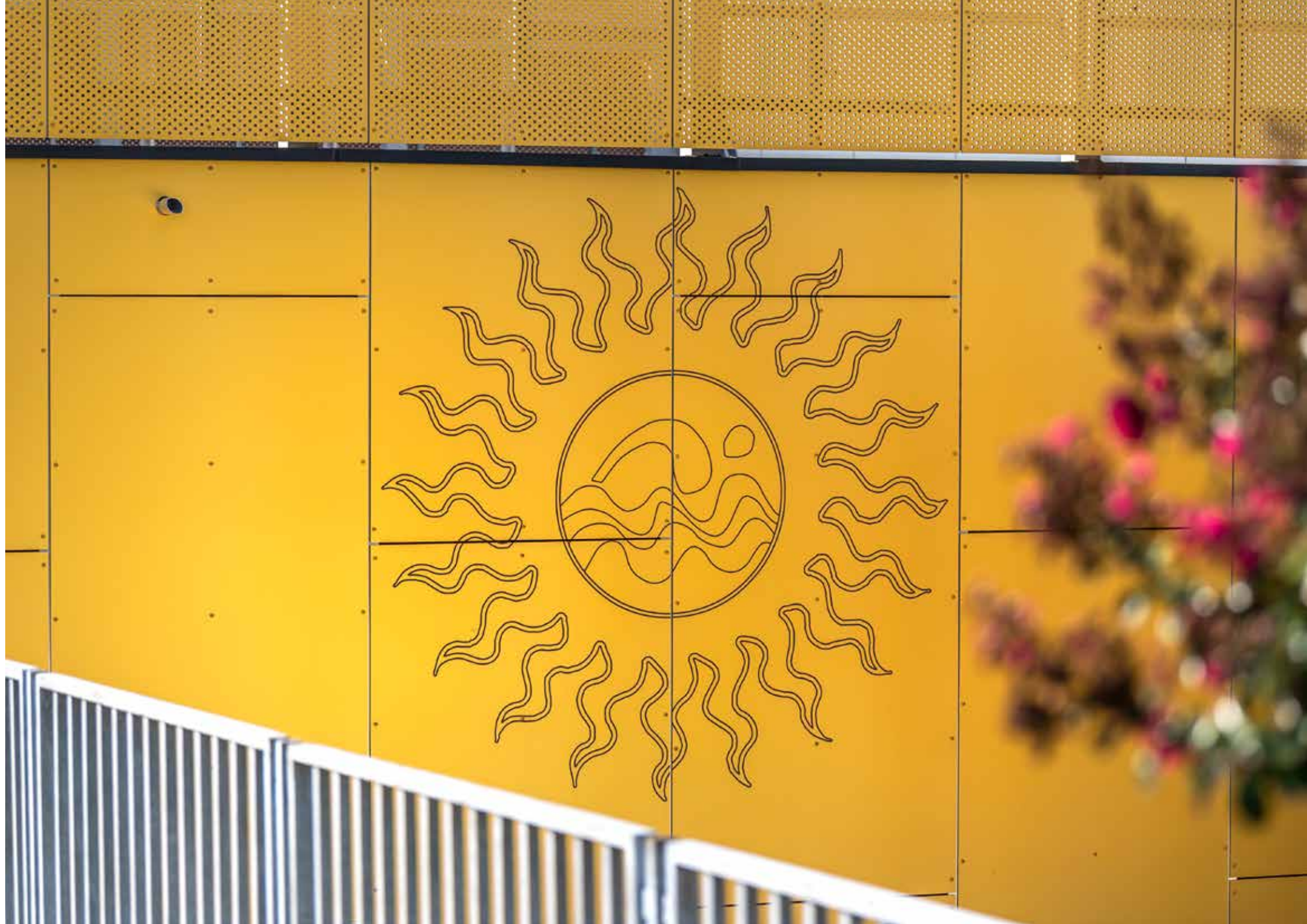
## Swimming Pool Piscine Plein Soleil with a Golden touch

Built in the 1970s, the Plein Soleil swimming pool in Bourg-en-Bresse in Ain (FR) has undergone a major renovation. Inside the building: the pool itself, the changing rooms, and the entrance hall. For the exterior of the building they have applied insulation and a new facade skin in Rockpanel Metals grey and gold designs. These panels feature a magnificent routed decoration.

Lucie Verniaut, associate architect Lipstick Architecture: "Rockpanel boards fully met our technical and aesthetic needs as well as our budget. In addition, made of volcanic rock, they can be engraved without the need to protect them against moisture".

**Lucie Verniaut - LIPSTICK Architecture**





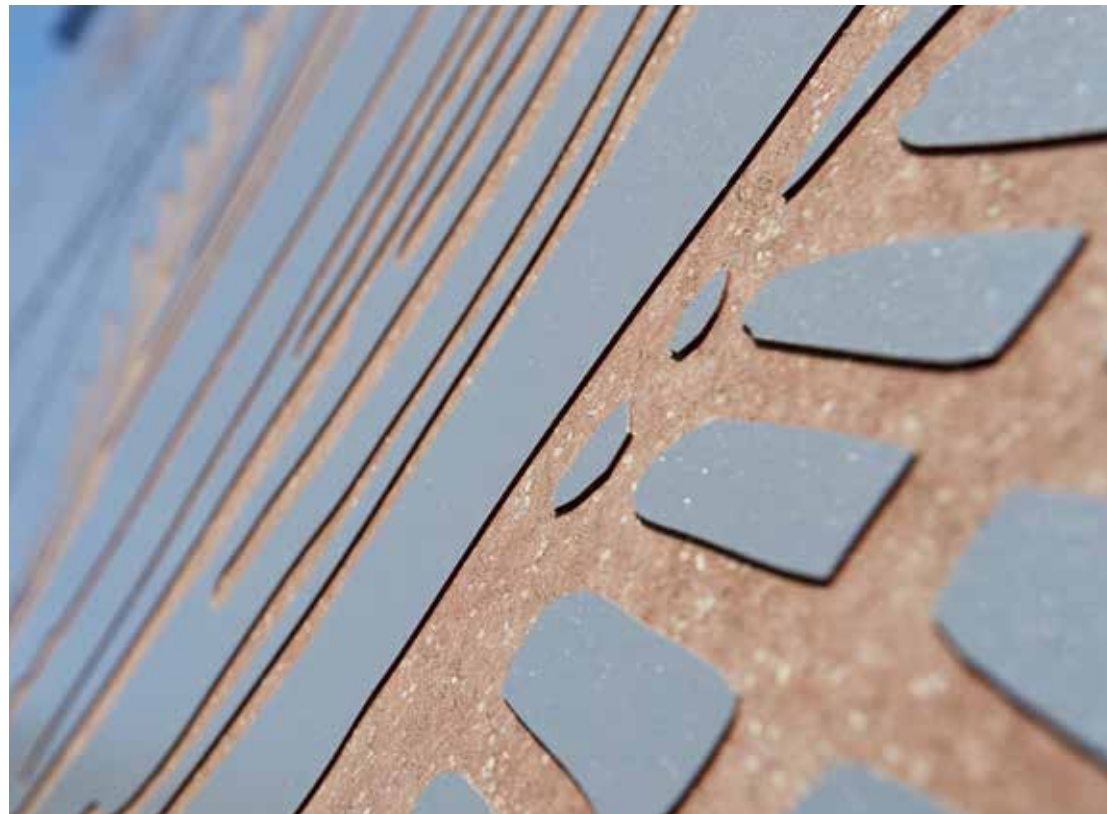


## Turning a school facade into a unique work of art

The Christophorus school in Mülheim-Kärlich (Germany) needed to have a facade that's sturdy, long-lasting and low-maintenance. Rockpanel Metals boards met all these requirements.

In addition, they had another big advantage: it was possible to engrave a superb work of art on them, without the need for any extra treatment. The façades now tell the story of Saint Christopher, after whom the school is named.

**Artistic design: Elke Pfaffmann and Stefan Kindel**





## Rockpanel Metals as a metaphor for “De Lijn”

For a new depot complex for the “De Lijn” – one of the largest transport company’s in Belgium – Rockpanel Metals proved the best choice when responding to the decorative ideas and wishes of the architect.

“The perforated Rockpanel Metals boards we used provide beautiful light effects. It was exactly what we wanted. The anti-graffiti finish is a very useful feature for a public building.”

**Archiles architects**





## The perfect blend of old and new

A beautiful, future-proof and (almost) energy-neutral building has been constructed on the exact location where the high school Christelijk Lyceum Veenendaal opened its doors more than 50 years ago. The two existing structures have been connected by adding new volume, creating the social heart of the school.

The blend of old and new is also represented in the facade. The irregular pattern of open and closed parts clad with Rockpanel Custom Metals boards bring a playful touch to the rigid structure.

**NOAHH Architects**



## A facade that tells the story of Rockpanel

The headquarters of Rockpanel is also clad with boards from the Metals range. Luc Nooijen (Architecten Aan de Maas) created the facade design:

“It’s much more than a facade. It’s the very essence of the unique product Rockpanel. Expressive, but without a cacophony of colours and shapes. Discreet at the same time. The facade illustrates that Rockpanel board material can be shaped in any possible way.”

**Luc Nooijen – Architecten aan de Maas**





## **Looking for even more inspiration?**

Visit the 'Inspiration' section on our website for more case studies.

## BUILDING INSPIRATIONS



Part of the ROCKWOOL Group

[www.rockpanel.co.uk](http://www.rockpanel.co.uk)

Learn more about us, ask for product samples and be inspired by attractive reference projects.



[www.instagram.com/rockpanel](https://www.instagram.com/rockpanel)

Get inspired.



[www.facebook.com/rockpanel](https://www.facebook.com/rockpanel)

Be the first to discover our latest international projects.



[www.twitter.com/rockpanel](https://www.twitter.com/rockpanel)

Follow us for the latest news and updates.



Engage and interact.